

# X-ray Single Crystal Orientation System s-Laue

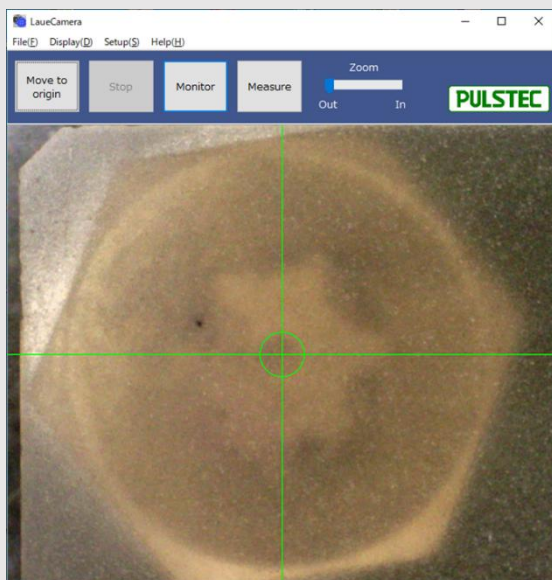
—Small and easy to handle—

## Application / Features

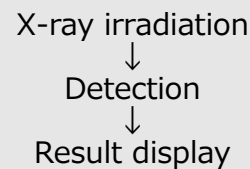
- ◆ Orientation check • Adjustment
- ◆ Crystallinity check
- ◆ Air cooling • Compact
- ◆ Easy operation • Fast measurement

## Measurement procedure

### STEP.1 Set the sample (XY)



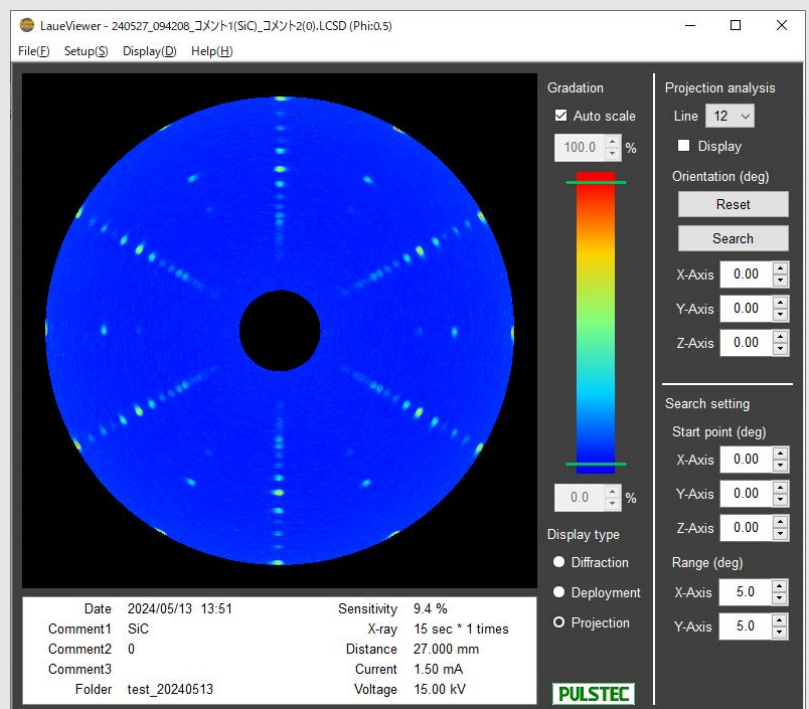
### STEP.3 Start measurement



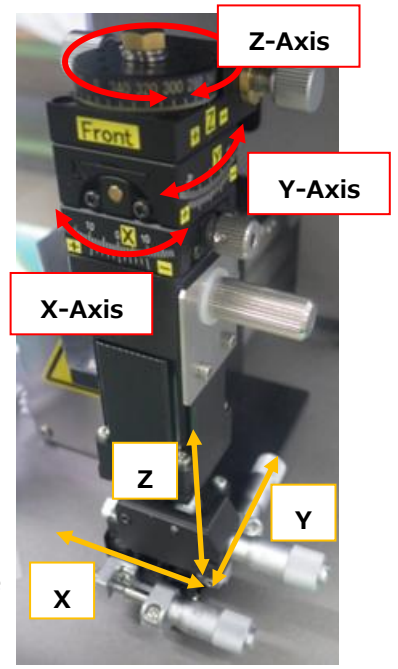
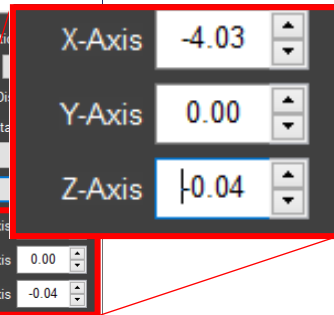
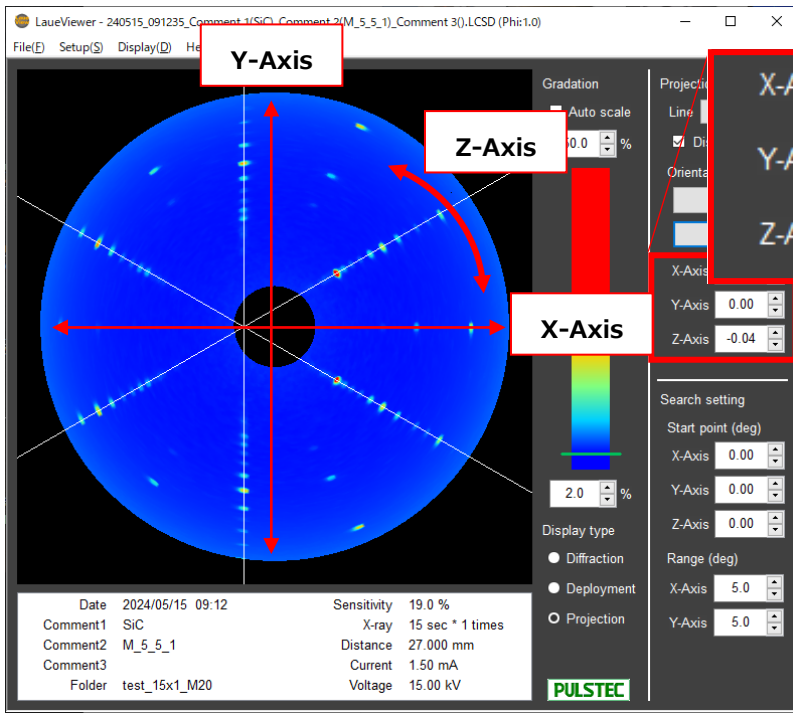
### STEP.2 Set the sample (Z)



### STEP.4 Display result



# Angle analysis / Sample stage



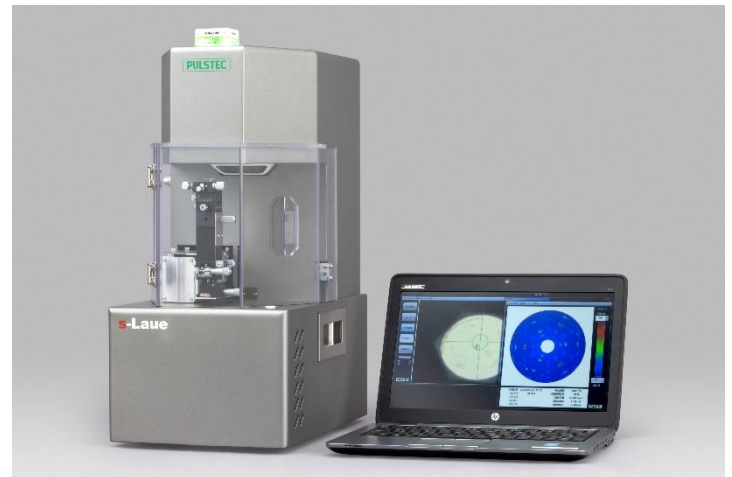
1. Orient the crystal for cutting
2. Remove the goniometer stage and bring it to the cutting machine

6 axis stage

## Specification

X-ray tube	W (Tungsten)
Voltage/Current	30kV/1.6mA max
Cooling	Air cool
Incident angle	Vertical
Spot size	φ0.8mm (Standard collimator)
Sample distance	33mm *Recommended
Measurement time	80 secs *Typical
Sample stage	6 axis Linear stage: X /Y /Z Gonio stage: X /Y /Z -Axis
Diameter	W224mm D414mm H480mm
Weight	Approx. 30kg
Power/Power consumption	AC100~240V, 50/60Hz, 150W max
Other	Door Interlock

## Configuration



Large sample/On-site measurement

※Please feel free to ask if the sample is large or for on-site measurement, such as single crystal turbine blade. We will propose the portable type.

7000-35 Nakagawa, Hosoe-cho, Hamana-ku,  
Hamamatsu-city, Shizuoka 4311304 JAPAN  
TEL+81(0)535223611  
FAX +81(0)535223666



Pulstec Industrial Co., Ltd.

URL: <https://www.pulstec.co.jp/en/>