

Hologram Material Test System
[Two beam interference Method]

SHOT-500

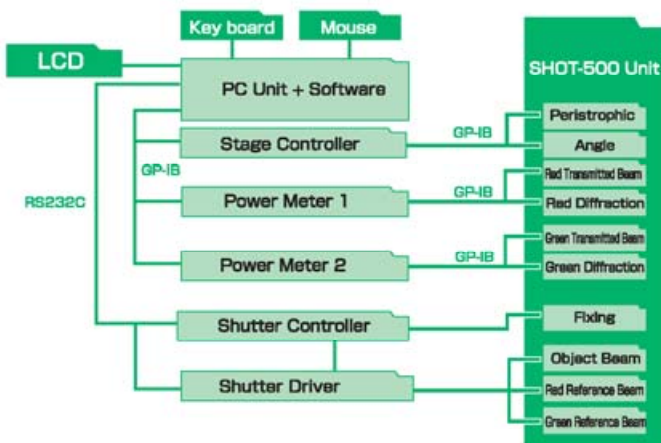
Standard Holographic Optical Tester



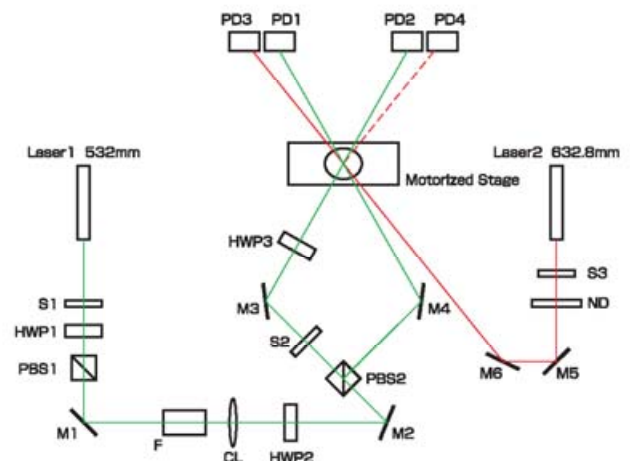
SYSTEM OUTLINE

The plane wave tester, SHOT-500, is an automatic evaluation system for the characteristic of recording material by two beam interferometry. This system is equipped with the dynamic function to record/playback with green laser hologram(532nm) and playback with red laser hologram(633nm) spontaneously. Using the angle multiplex and peristrophic methods together, this system can evaluate the decoding characteristic of multiplex and large capacity material.

BLOCK DIAGRAM



OPTICAL SYSTEM



CHARACTERISTIC

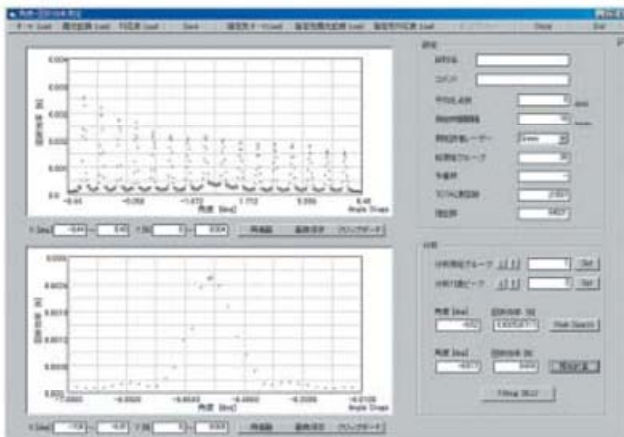
- Possible to evaluate the characteristic of material automatically except for sample set.
- Possible to carry out screening the material at high-speed mode.
(Comparison with conventional system: 1/6 Difference between the measured value: Less than 5%)
- Possible to evaluate the multiplexed and large material by using angle multiplex and peristrophic method together.
- Equipped with the careful selected laser
- Small variations among tester (from tester to tester)

SPECIFICATION

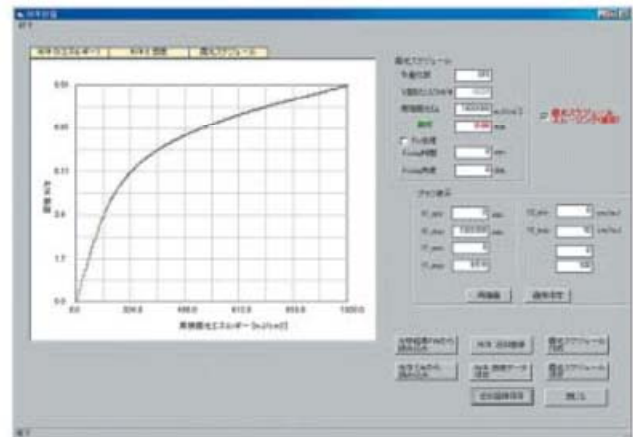
- Recording/Playback Laser 532nm
- Measurement Laser 633nm
- Optical Power Meter (4CH) is used in the Detecting Part.
- Objective Sample: □30 x 30mm t=1.2~2.8mm
- Laser class : 2B
- Power supply : AC100V 4A
- Dimension :
Mechanical unit 1240 (W) × 940 (D) × 1160 (H)
Control unit 800 (W) × 735 (D) × 1510 (H)

FEATURE

- Optical Alignment supporting Tool
- Single Hologram Evaluation
(Angle Variation • Diffraction Efficiency • Real-time Evaluation for Cross-Talk Interference Pattern Intensity)
- Record/Playback the Multiplex Hologram
(Specified the stage angle and exposed energy recording. Real-time display of the recording data)
- Multiplex Hologram Analysis
(Search the Peak of Diffraction Efficiency and Angle • M/# • Sensitivity • Shrinkage • Plane Wave Scheduling)
- High-speed Evaluation
(Shorten the playback time when recording the multiplex hologram from hundreds to thousands.)
- Pre-exposing
- Fixing



Screen for searching the hologram peak with the Multiplex Analysis Tool.



M/#, Sensitivity Curve, displayed on the Multiplex Hologram Analysis Tool.

Future development Plan

Blue Laser • CW/Pulse Switching • Page Data

※Please be noted that this specs may change without prior notice.

PULSTEC

Pulstec Industrial Co.,Ltd

■Head Office

7000-35, Nakagawa, Hosoe-cho, Kita-ku,
Hamamatsu, Shizuoka Pref.,
431-1304 Japan
TEL +81-53-522-3611
FAX +81-53-522-3666

■Europe Office

Office 18, 12 Devon Place, Newport,
South Wales, NP120 4NN, UK
TEL +44-7867-972860

MEMO